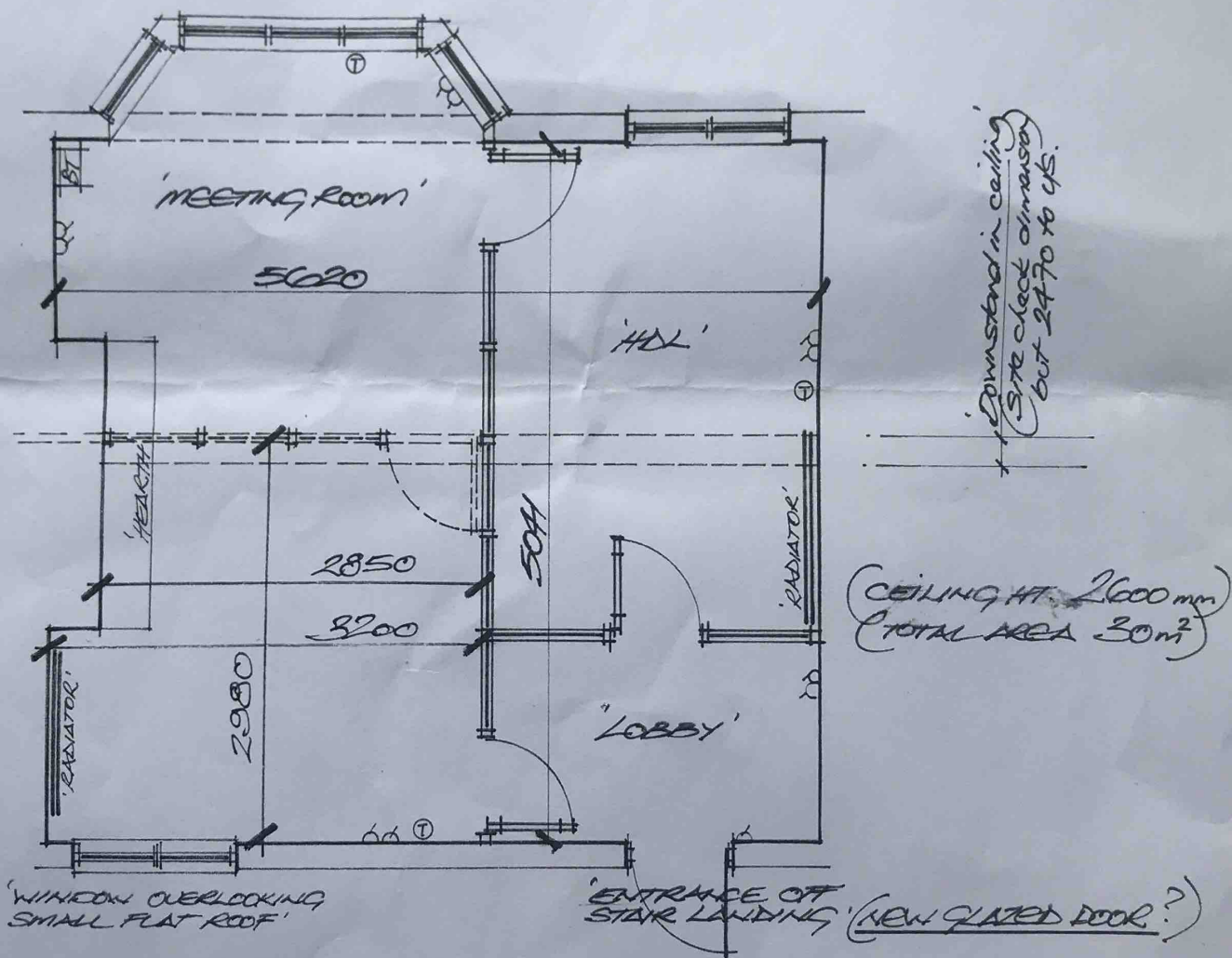


'FRONT ASPECT WITH
VIEWS TO JOHNSTON ROAD
& GREEN'



FLOOR PLAN (FIRST)
1/2 JOHNSTON ROAD
WOODFORD GREEN
ESSEX
198 OXA

SCALE 1:50

holmesdesignltd

| architectural | interior design consultants |

1-2 johnston road, woodford green, essex IG8 OXA

telephone: 020 8502 9010 fax: 020 8505 8567

mobile: 07774 861 555

email: holmes-design@btconnect.com

web: www.holmesdesignltd.com